

HOLDER FOR TUBULAR HANDLEBARS

SMSMARTPHONE

INTERPHONE SMSP



Water resistant Smartphone holder for motorcycles - for tubular handlebars with 12-30 mm diameter - impact protection.



motorbike



bicycle



impact protection



adjustable angulation



touch screen connection



water resistant zippers

interphone **SMSP** SMARTPHONE HOLDER



water resistant

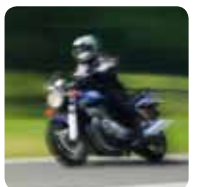


safety band



SMARTPHONE HOLDER FOR TUBULAR HANDLEBARS

Universal water resistant Smartphone holder for motorcycles and bicycles. Secure and protected by a knock-proof case that's really sturdy, your Smartphone can follow you wherever you go - even on excursions outdoors. The holder is equipped with a mounting bracket that can be fixed on circular handlebars of various diameters. Since the bracket is articulated, the holder can be tilted and turned in a number of ways, so it's comfortable and easy to use. It protects your mobile phone from impacts and harmful substances such as: water spray, dirt, dust and light rain. The clear front window made of special crystal film protects the phone, allows the keys on your touch screen to be fully functional, and provides an excellent view of the display. The double zip offers a practical system for threading earphone and power cables through the case and into the phone.



Functions

- Internal dimensions can be adjusted with the 3 shims included in the package
- Safety band
- The zips adapt to the position of the cable exit



- Water resistant case and zip



- Knock-proof guard surrounds unit for maximum protection



- Handlebar mounting bracket with adjustable viewing angle



- Crystal film is compatible with all touch screens

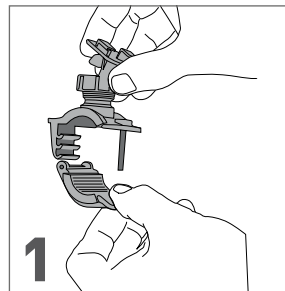
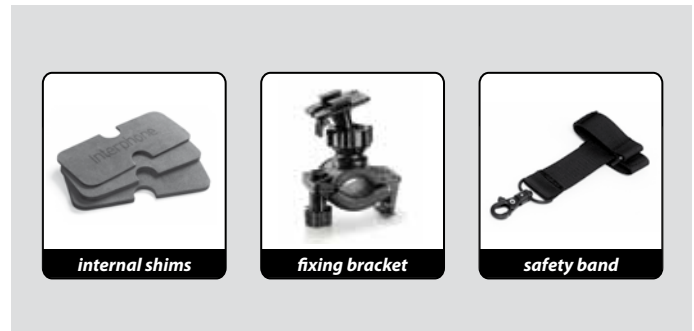


- Easy installation on motorcycle handlebars (Ø 12-30 mm)

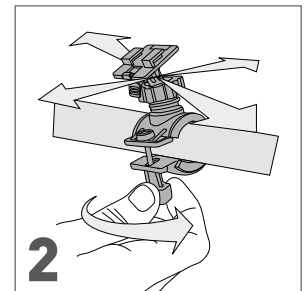


- Easy installation on bicycle handlebars (Ø 12-30 mm)

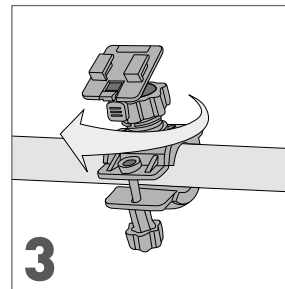
safety band



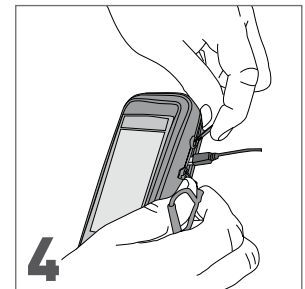
Adjustable system for mounting on handlebar



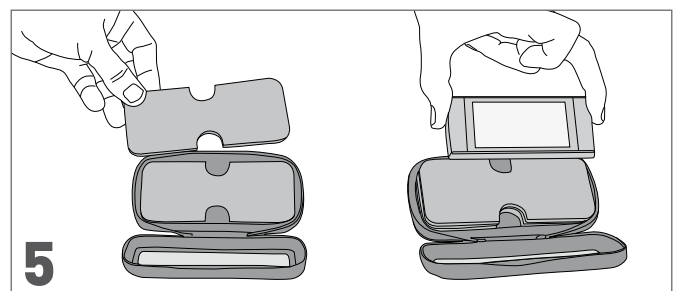
Screw the mounting system onto handlebar and adjust the tilt of the base as desired



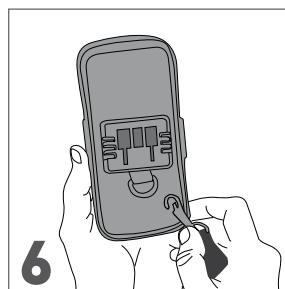
Tighten the adjustment collar on the base tilt system



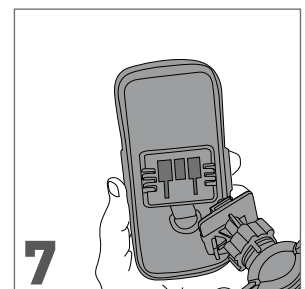
Use the double zip to allow cables to enter the case (if necessary)



Insert the shims provided with the unit until the suitably shimmed Smartphone touches the clear surface of the case



Hook the safety band to the case, and fasten the Velcro closure on other end of the strap to the handlebar



Snap the case onto the bracket